

Les lettres alphabétiques du puguli

L' Ordre alphabétique

a b ɓ c ch

d ɗ e ɛ f

g gb h i ɩ

j k kh kp l

m ɲ n ŋ ŋm

o ɔ p ph r

s t th u ʊ

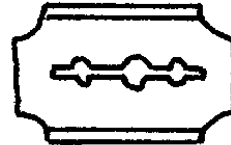
v w w̃ y ỹ z

L'alphabet puguli en images

a

bàràga

lame



b

balú

homme



ċ

ċālari

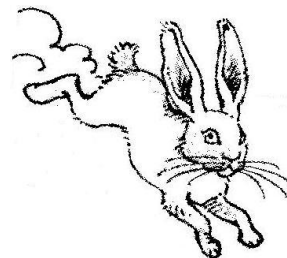
hérisson



ċ

ċùmu

lièvre



ch

chvèchvèé

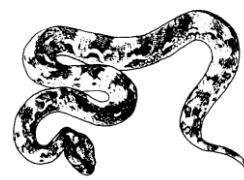
mouche



d

dvmə

serpent



f

fvèè

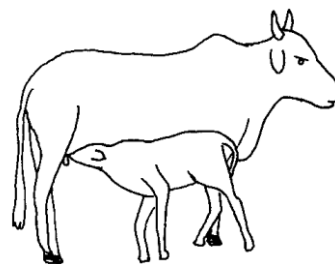
taupe



e

nebie

veau



ε

heme

flêche



f

fùla

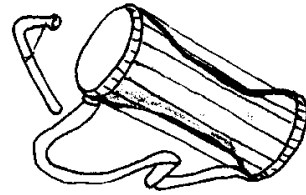
calebasse



g

gògòo

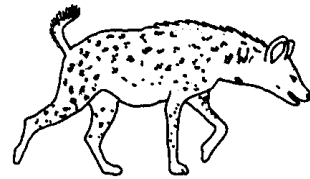
tambourin



gb

gbòloó

hyène



h

halú

femme



i

irié

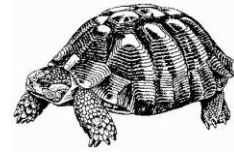
oeil



l

wlɛ

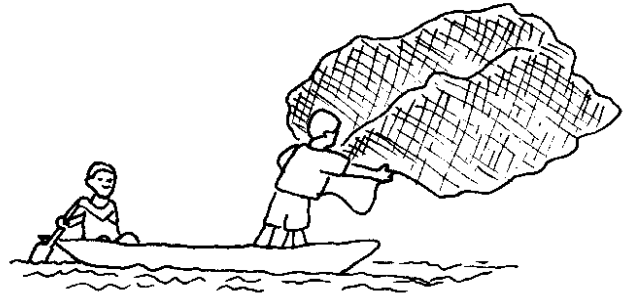
tortue



j

joó

filet



k

kātaŋá

maïs



kh

Khoó

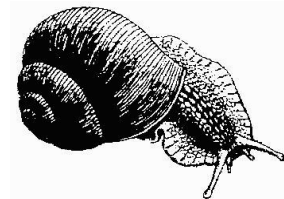
antilope



kp

kpàlàholòò

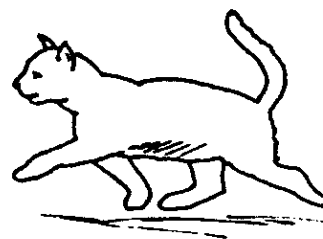
l'escargot





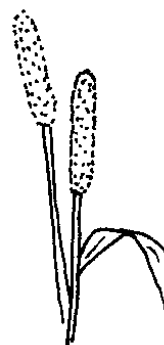
luì

chat



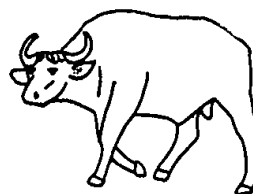
mia

mil



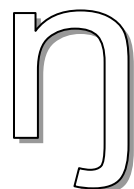
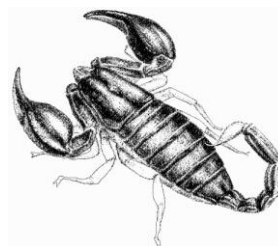
nò

buffle



nàmu

scorpion



naņe

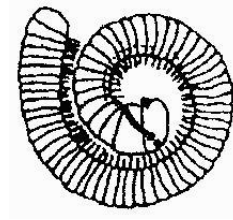
pied



ηm

ηmanɿ

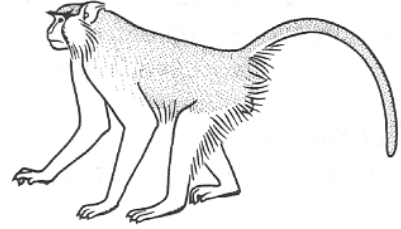
mille pattes



O

omo

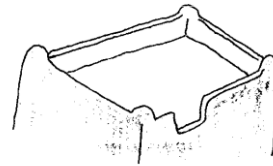
singe



hól

hól

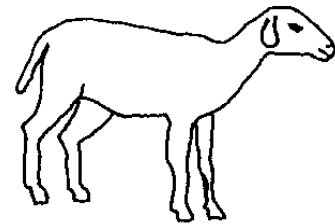
toit



p

pèrió

mouton



ph

phàphò

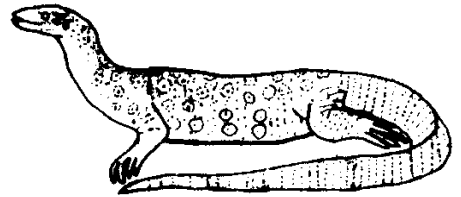
feuille



r

bàra

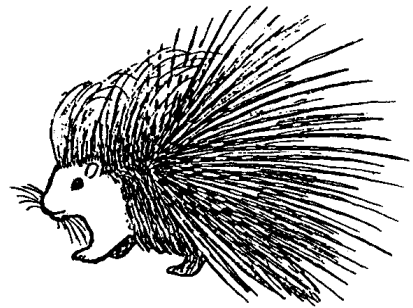
varan



s

same

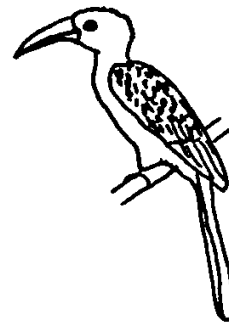
porc-epic



t

tilátuè

calao



th

thueo

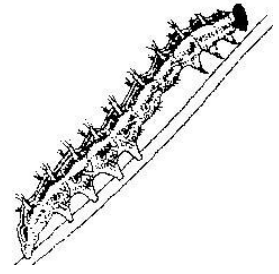
porc



U

dèdulu

chenille



U

tuɾu

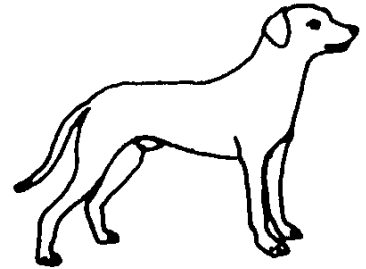
musaraigne



V

vaá

chien



W

wěε

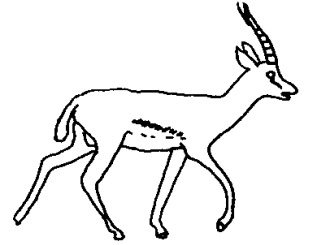
l'aigle



W

wèèma

biche



y

yɪla

dents



y

yeyehù

bagadais casqué (oiseau)



Z

zimie

poule

